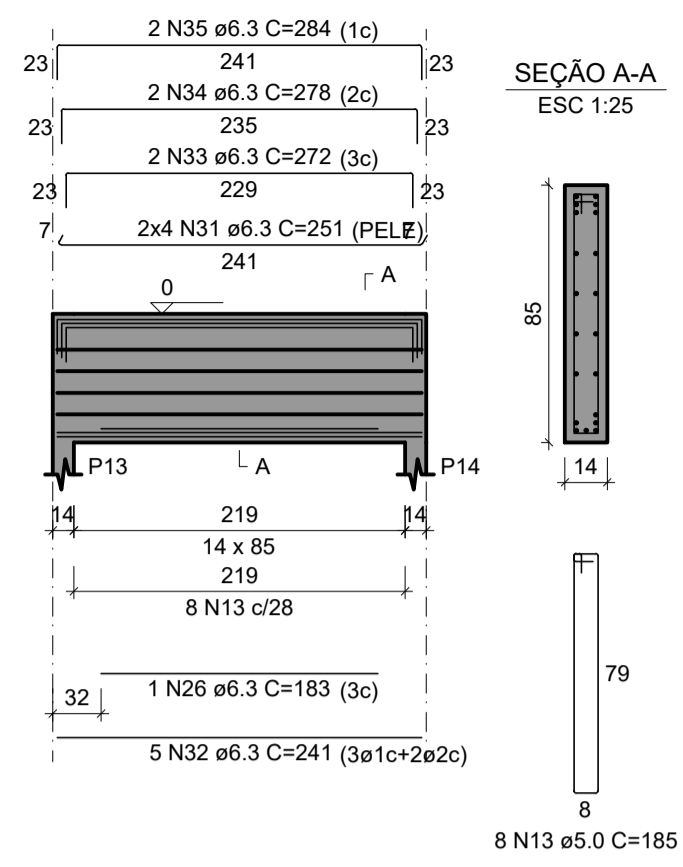
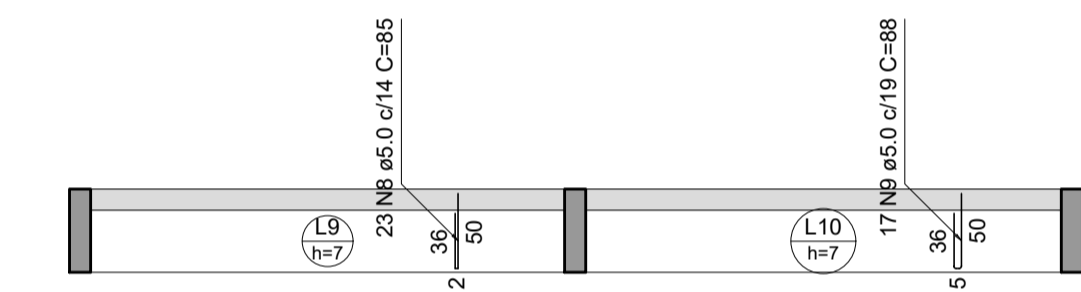
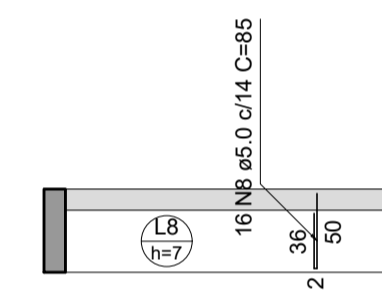
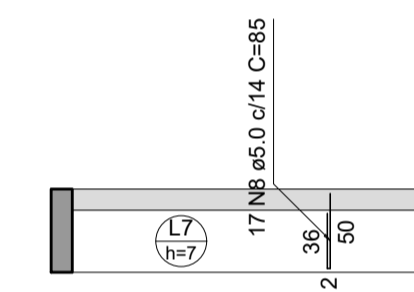
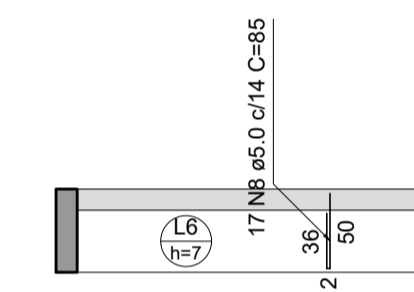
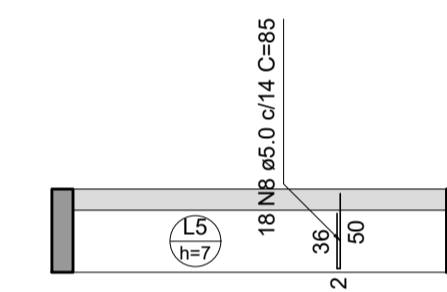
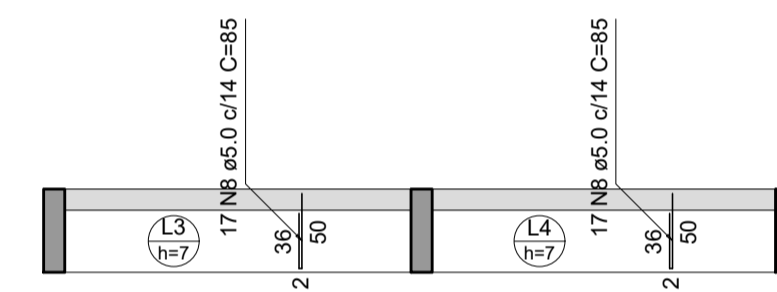
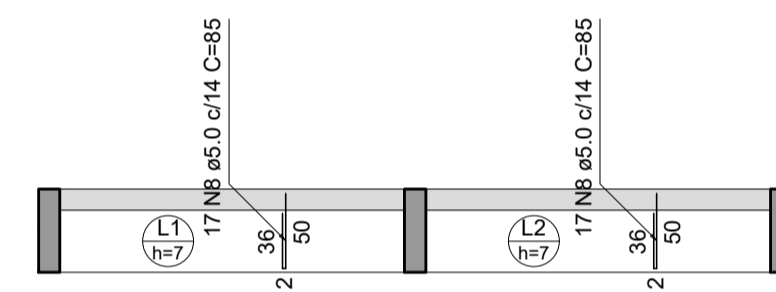
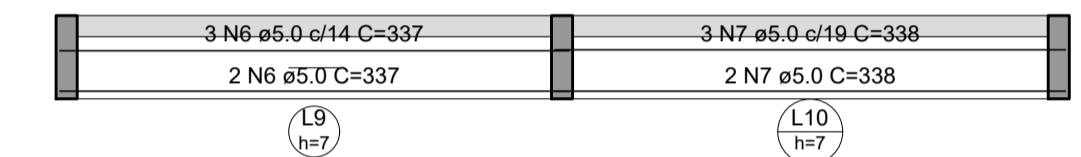
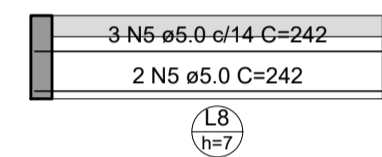
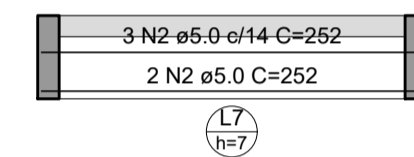
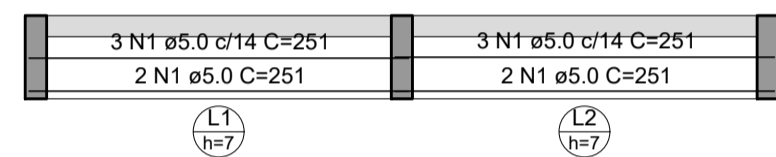
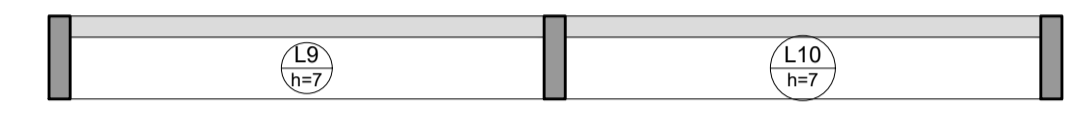
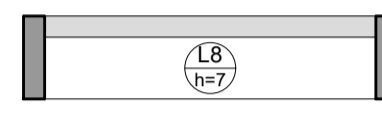
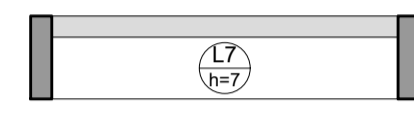
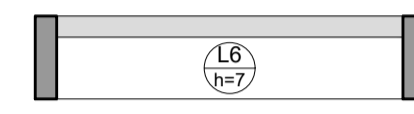
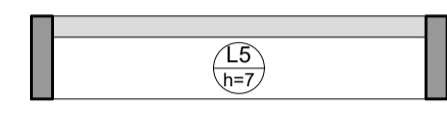
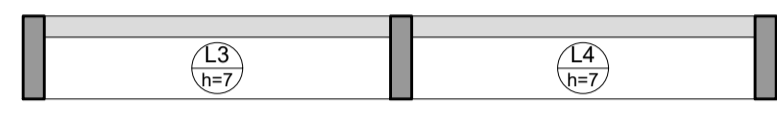
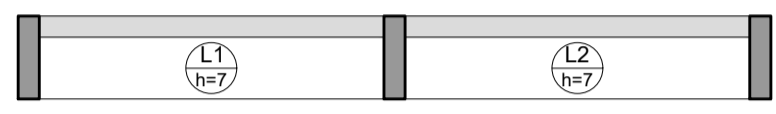
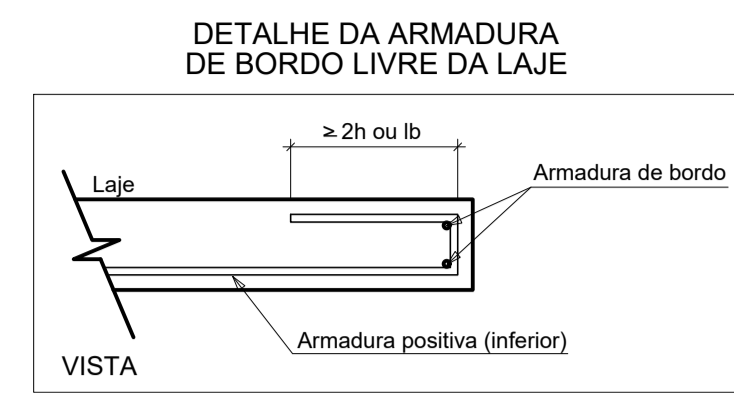
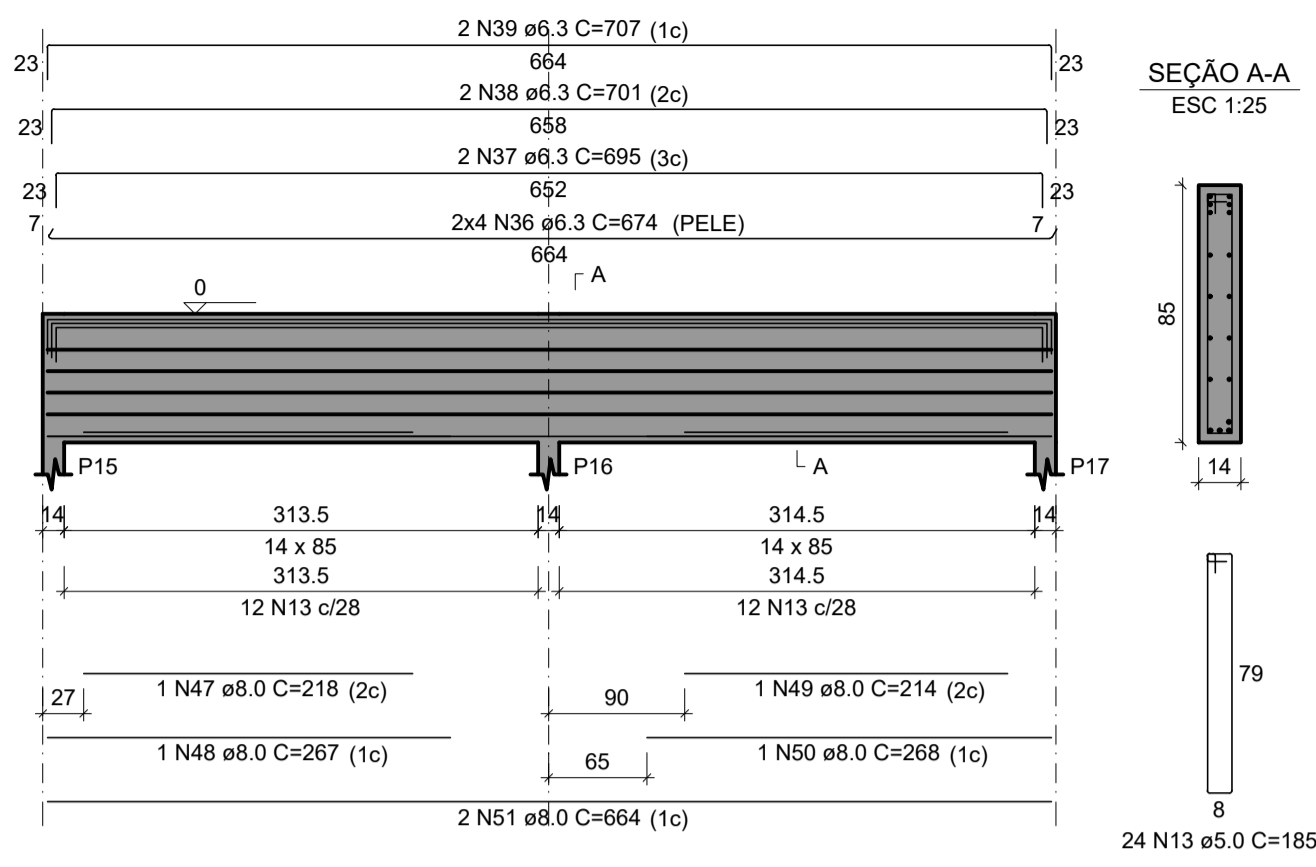


V6
ESC 1:50



V7
ESC 1:50



Armação negativa das lajes (Eixo X)

escala 1:50

Armação positiva das lajes (Eixo X)

escala 1:50

Armação positiva das lajes (Eixo Y)

escala 1:50

RELAÇÃO DO AÇO DOS BANCOS DE CONCRETO

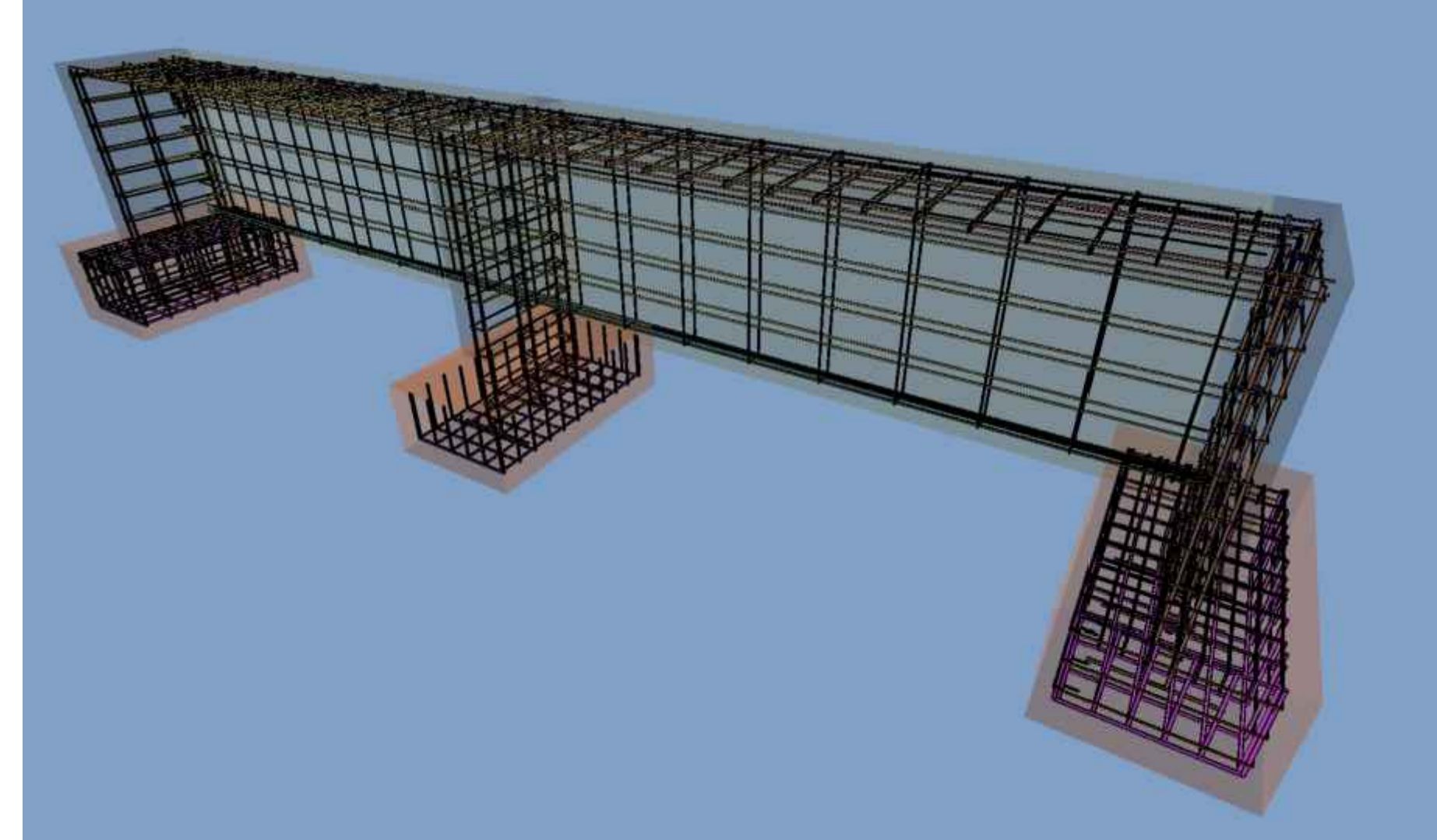
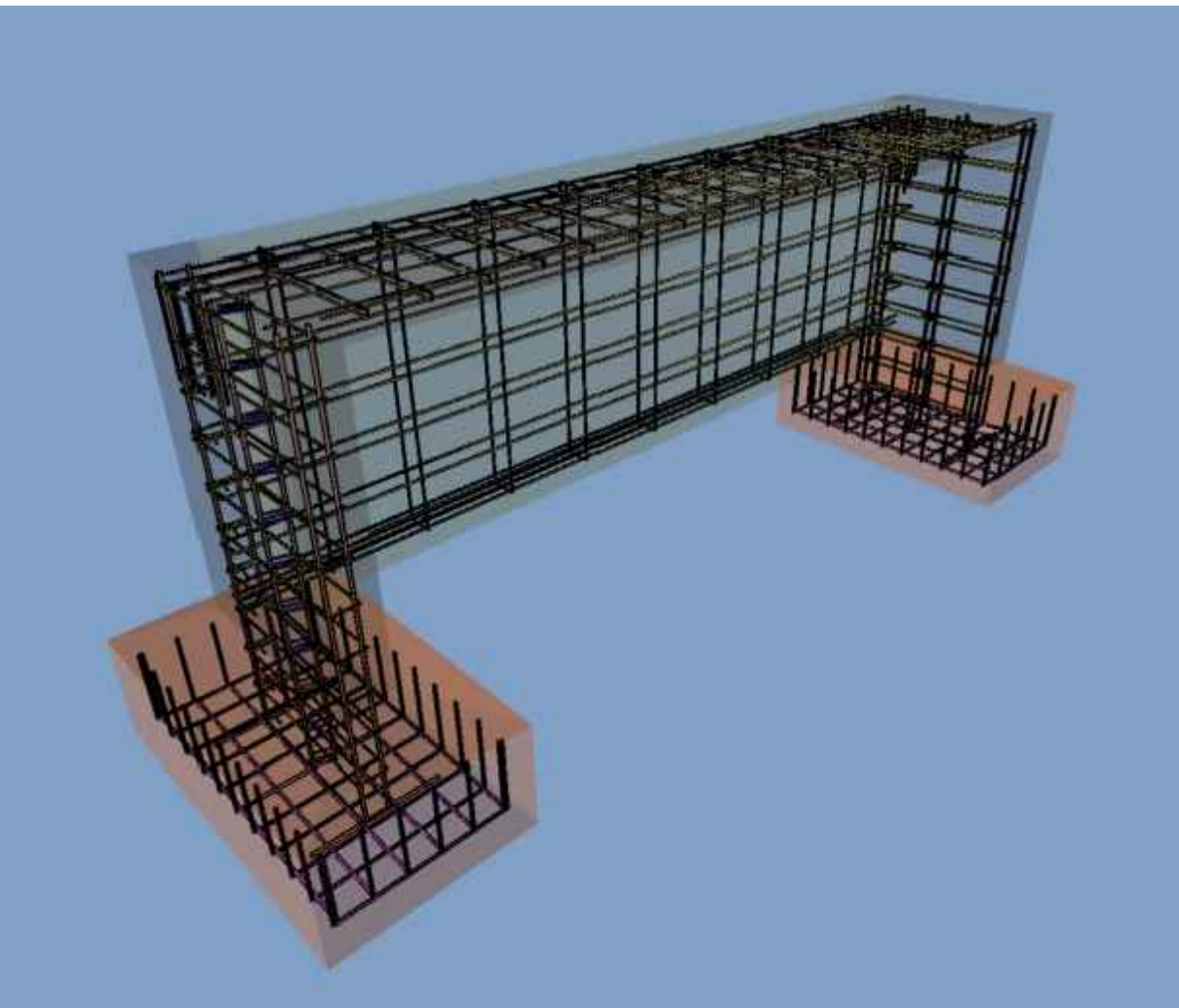
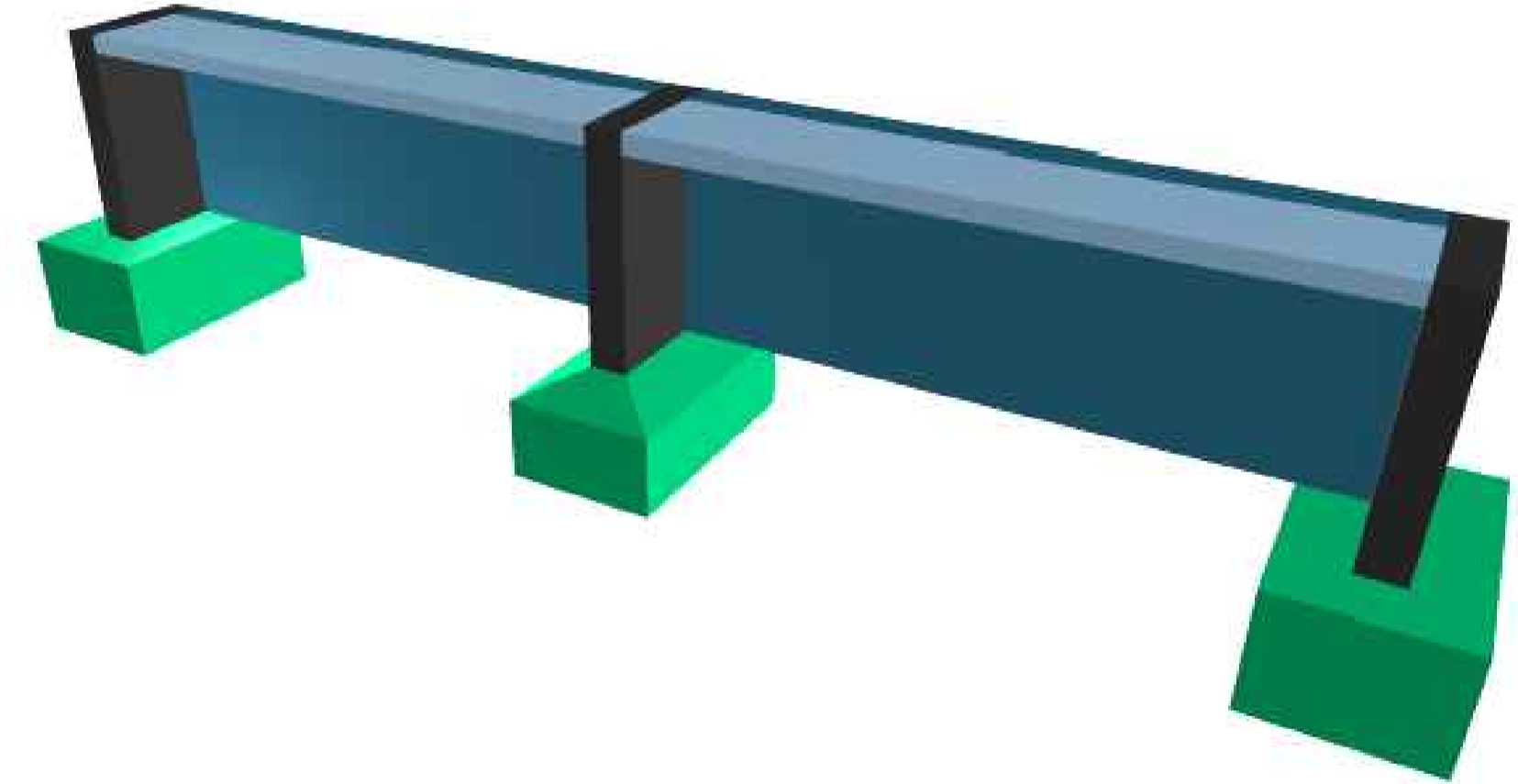
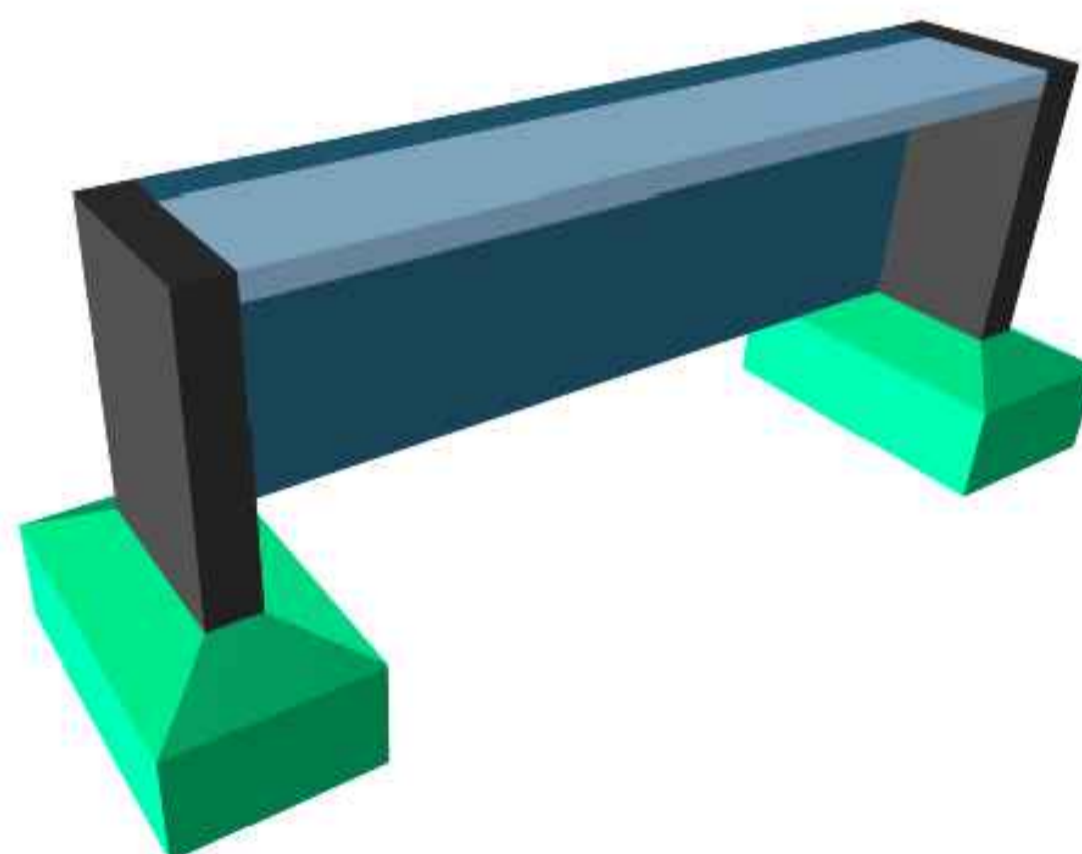
Positivos X	Positivos Y	6xP1
11xP2	6xS1	11xS10
V1	V2	V3
V4	V5	V6
V7		

AÇO	N	DIAM (mm)	QUANT	C.UNIT (cm)	C.TOTAL (cm)
CA60	1	5.0	10	251	2510
	2	5.0	15	252	3780
	3	5.0	5	250	1250
	4	5.0	5	270	1350
	5	5.0	5	242	1210
	6	5.0	5	337	1685
	7	5.0	5	338	1690
	8	5.0	159	85	13515
	9	5.0	17	88	1496
	10	5.0	187	23	4301
	11	5.0	187	125	23375
	12	5.0	18	275	4950
	13	5.0	95	185	17575
CA50	14	6.3	54	96	5184
	15	6.3	16	502	8032
	16	6.3	4	523	2092
	17	6.3	4	529	2116
	18	6.3	4	535	2140
	19	6.3	8	273	2184
	20	6.3	1	196	196
	21	6.3	5	269	1345
	22	6.3	2	300	600
	23	6.3	2	306	612
	24	6.3	2	312	624
	25	6.3	16	261	4176
	26	6.3	3	183	549
	27	6.3	10	251	2510
	28	6.3	4	282	1128
	29	6.3	4	288	1152
	30	6.3	4	294	1176
	31	6.3	8	251	2008
	32	6.3	5	241	1205
	33	6.3	2	272	544
	34	6.3	2	278	556
	35	6.3	2	284	568
	36	6.3	8	674	5392
	37	6.3	2	695	1390
	38	6.3	2	701	1402
	39	6.3	2	707	1414
	40	8.0	66	59	3894
	41	8.0	121	84	10164
	42	8.0	66	124	8184
	43	8.0	2	196	392
	44	8.0	6	492	2952
	45	8.0	1	197	197
	46	8.0	1	195	195
	47	8.0	1	218	218
	48	8.0	1	267	267
	49	8.0	1	214	214
	50	8.0	1	268	268
	51	8.0	2	664	1328
	52	10.0	102	135	13770
	53	10.0	48	102	4896
	54	10.0	36	142	5112

RESUMO DO AÇO

AÇO	DIAM (mm)	C.TOTAL (m)	PESO + 10% (kg)
CA50	6.3	503.4	135.5
	8.0	282.7	122.7
	10.0	237.8	161.3
CA60	5.0	786.9	133.4
PESO TOTAL (kg)			
CA50			419.5
CA60			133.4

Volume de concreto (C-25) = 8.06 m³
Área de forma = 92.49 m²



<p>CONTRATADA:</p> <p>CNPJ Nº: 14.783.066/0001-35 AVENIDA MESTRA FRINHA, Nº 726 - 1º ANDAR, CIDADE SANTA MARIA, MONTES CLAROS/MG - CEP: 39401-074</p>		<p>CONTRATA</p> <p>CNPJ Nº: 18.017.368/0001-28 RUA ANTONIO MAIA SOBRINHO, Nº 43 - CENTRO JURAMENTO/MG - CEP: 39390-000</p>	
<p>RESPONSÁVEL TÉCNICO:</p> <p>GERALDO DIAS FERREIRA JÚNIOR CREA-MG 248.562/D</p>		<p>RESPONSÁVEL LEGAL:</p> <p>PREFEITO(A) MUNICIPAL DE JURAMENTO</p>	
<p>REFORMA DA PRAÇA DEPUTADO ANTONIO PIMENTA</p>			
<p>DESCRIÇÃO: VIGAS, LAJES E IMAGENS 3D DOS BANCOS</p>			
<p>ENDEREÇO DA OBRA: AVENIDA DR. JOÃO FERREIRA PIMENTA, S/N, BAIRRO CENTRO, SEDE DO MUNICÍPIO</p>			
<p>MUNICÍPIO: JURAMENTO/MG</p>		<p>DATA INICIAL: 08 DE JANEIRO DE 2024</p>	
<p>FASE DO PROJETO: INICIAL</p>		<p>ART/RRT: MG20242681451</p>	<p>DATA DA REV.: -</p>
<p>REFERÊNCIA DO PROJETO: 1735</p>		<p>ESCALA: INDICADAS</p>	<p>Nº REVISÃO: 00</p>
			<p>03/05</p>

ESTRUTURAL